

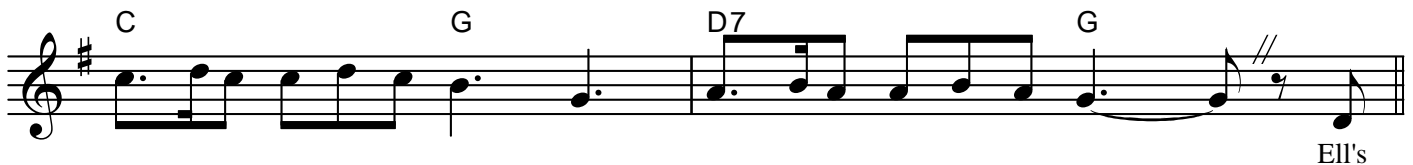
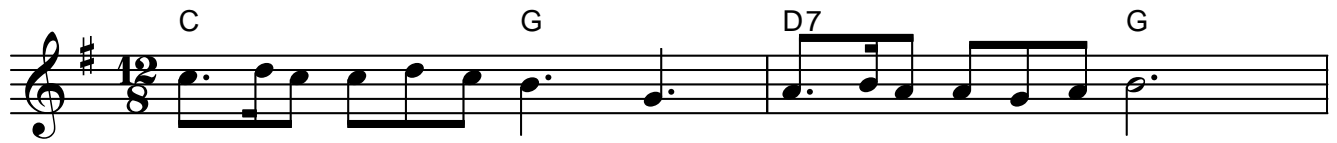
TOUTES LES FEMMES SONT DES FLEURS

slow-rock

paroles de
Marc PROVANCE

musique de
Roger LARCANGE

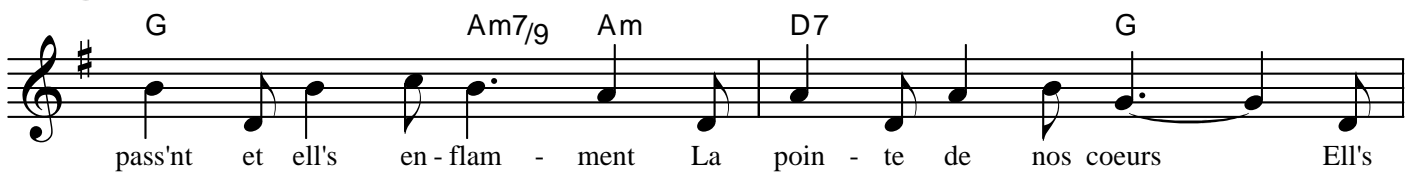
T°di slow-rock



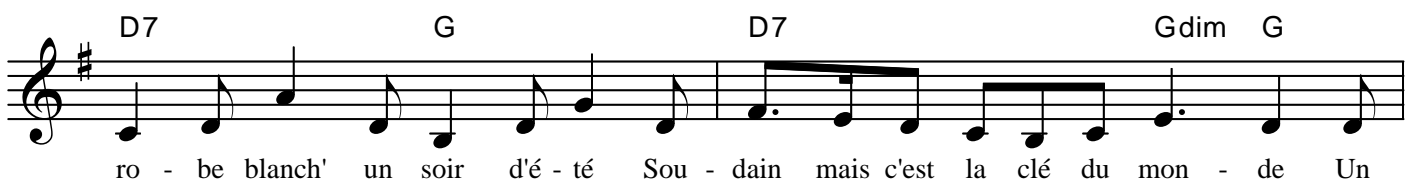
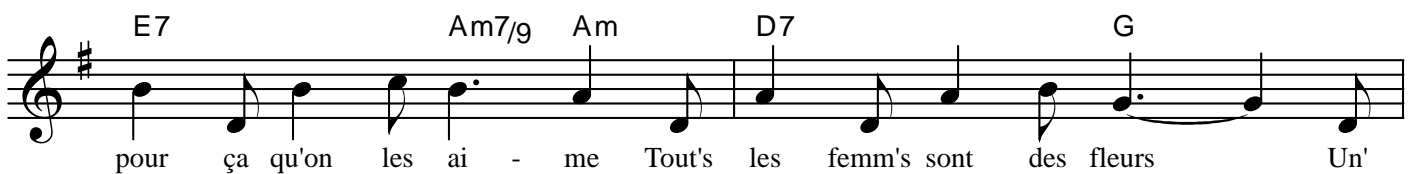
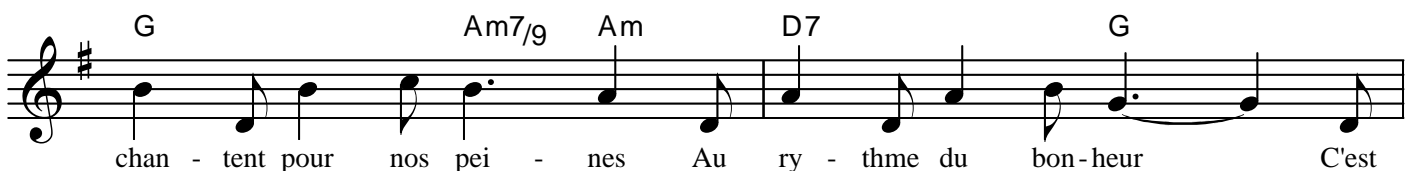
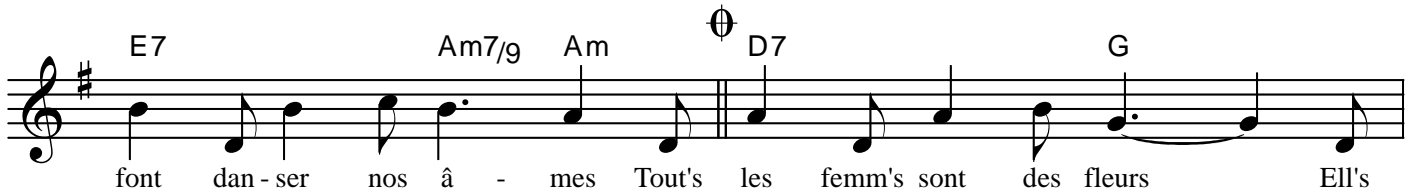
Ell's



REFRAIN



al coda

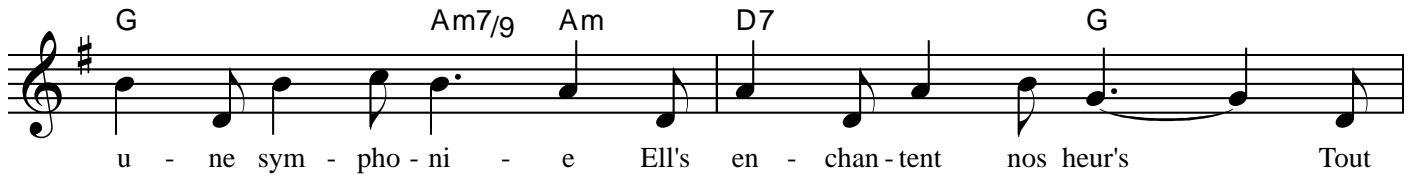


D7 G A7 Am D7



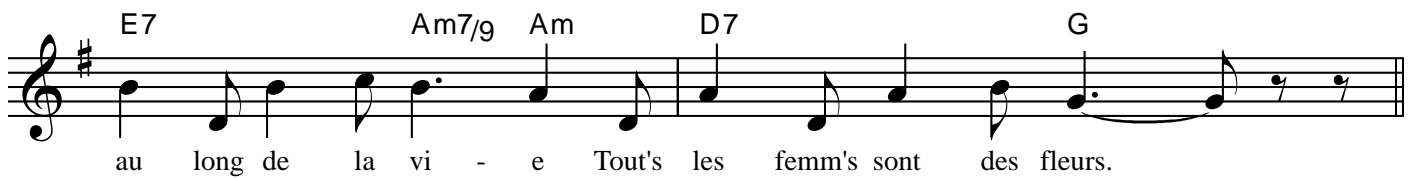
doux par-fum qui fait rê-ver Voi-là l'a-ve-nir est chan-gé Comm'

G Am7/9 Am D7 G



u-ne sym-pho-ni-e Ell's en-chan-tent nos heur's Tout

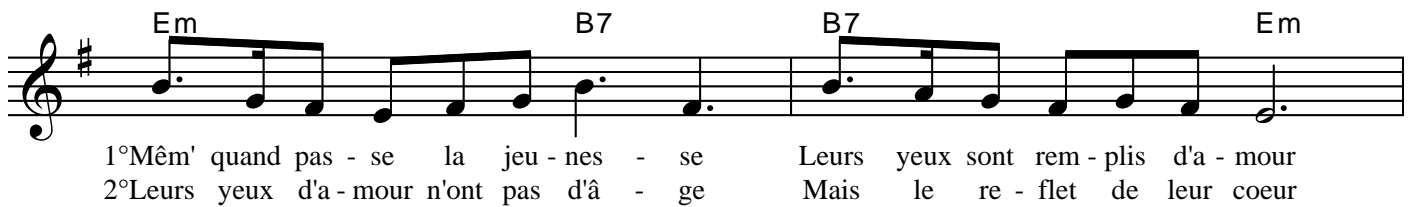
E7 Am7/9 Am D7 G



au long de la vi-e Tout's les femm's sont des fleurs.

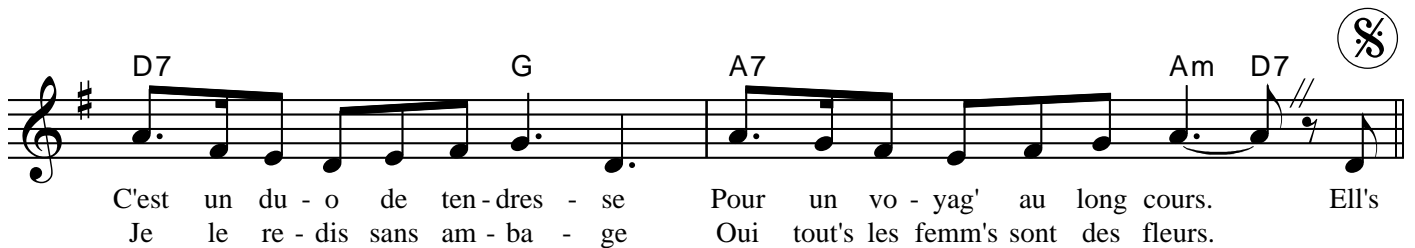
COUPLETS

Em B7 B7 Em



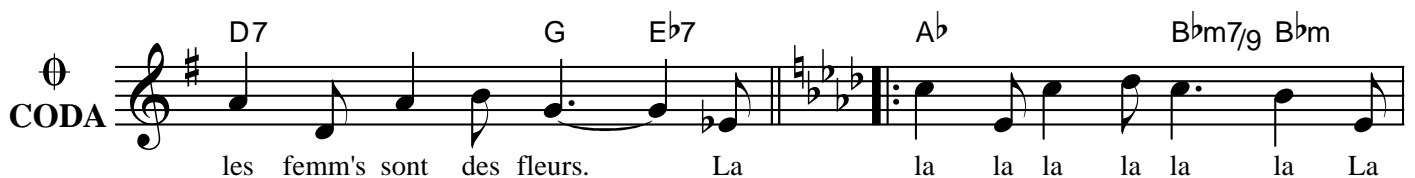
1°Mêm' quand pas-se la jeu-nes-se Leurs yeux sont rem-plis d'a-mour
2°Leurs yeux d'a-mour n'ont pas d'â-ge Mais le re-flet de leur coeur

D7 G A7 Am D7



C'est un du-o de ten-dres-se Pour un vo-yag' au long cours. Ell's
Je le re-dis sans am-ba-ge Oui tout's les femm's sont des fleurs.

CODA D7 G Eb7 Ab Bbm7/9 Bbm



les femm's sont des fleurs. La la la la la la La

repr. ad lib.

Eb7 Ab F7 Bbm7/9 Bbm Eb7 Ab



la la la la La la la la la la la Tout's les femm's sont des fleurs. La